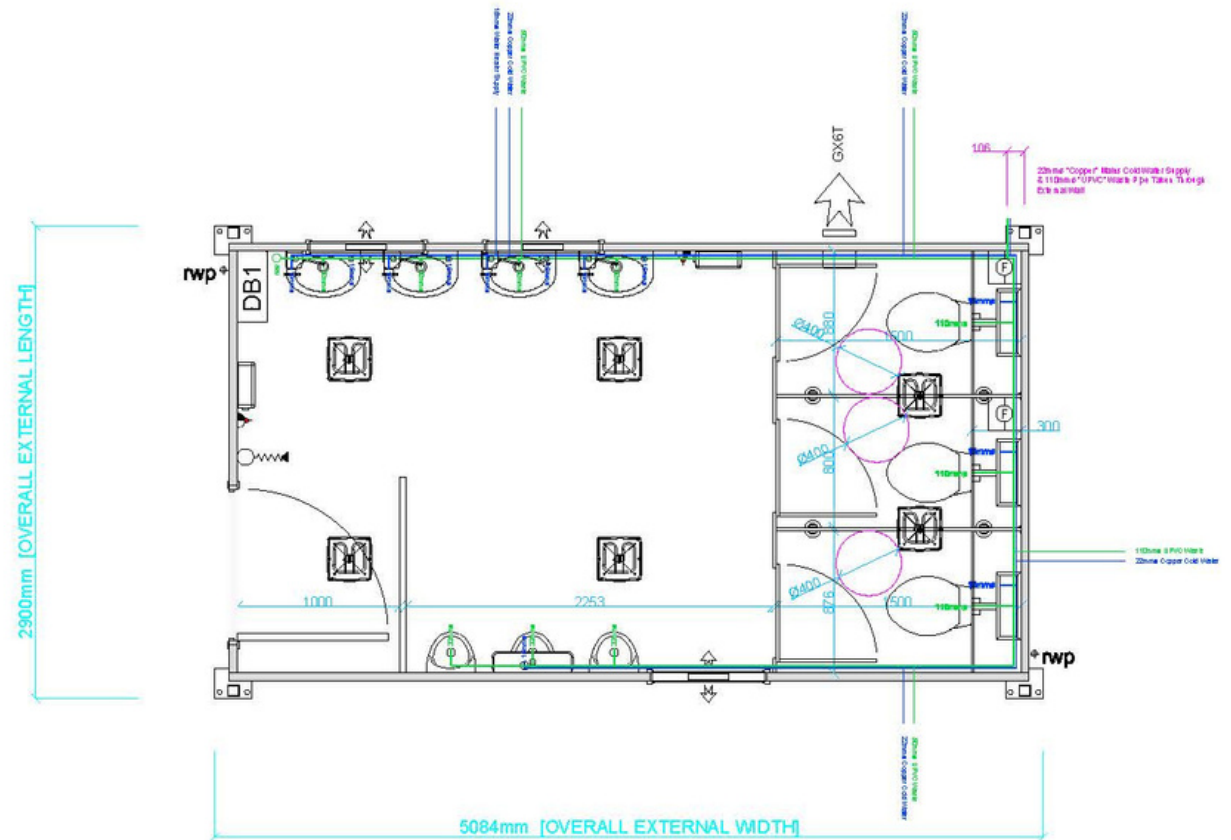
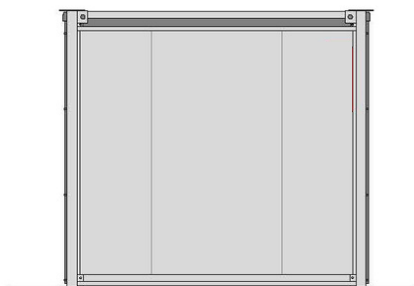
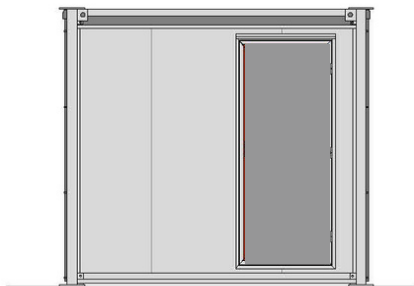
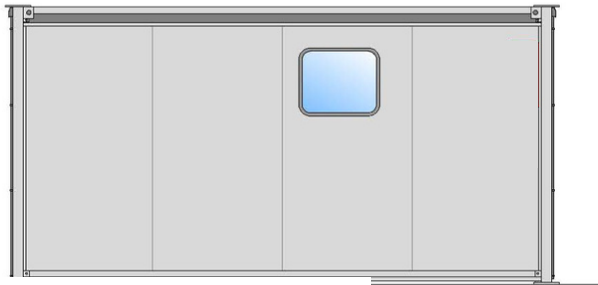
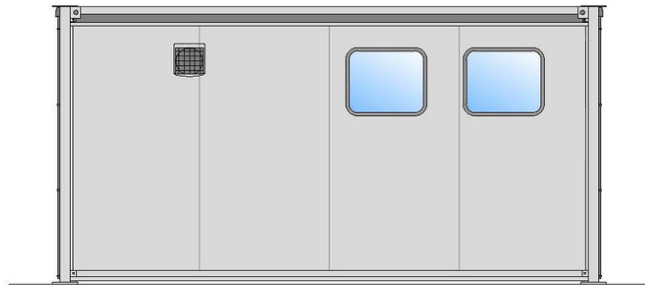


# 161 Type H

## Gender neutral toilet unit



# 161 Type H

## Gender neutral toilet unit

### Dimensions

External Length	5.09m
External Width	2.90m
External Height	2.61m
Leg Centres (length)	4.85m
Leg Centres (width)	2.81m
Shell weight	2108kg
Max handling weight	2650kg

### Plumbing Connections

Water Inlet	1 x 15mm
Waste Outlet	1 x 110mm
Running pressure require	1 bar
Inlet flow rate required	41 litres per minute

### Electrical Loading

Single Phase 230v  
24 Amp (total)

### Fixtures & Fittings

1 x 926mm Inward Opening External Door with Lock  
3 x High Level, Obscured Windows  
3 x WC  
4 x Wash Hand Basin  
3 x Urinal (can be removed for female use)  
1 x 25L Water Heater  
1 x High Level Convector Heater  
1 x Extractor Fan  
3 x Soap Dispenser  
1 x Paper Towel Dispenser  
1 x Waste Paper Bin  
1 x Battery Operated Air Freshener  
3 x Hat & Coat Hook  
3 x Mirror

### Important Building Information

All Portaloo buildings are thoroughly cleaned and tested prior to delivery. An electrical test certificate and functional plumbing test certificate are provided within the building for inspection.

The final connections from services on site into the Portaloo building should be carried out by a suitably qualified and competent professional.

The following services are excluded unless otherwise stated. A quotation is available on request:

- ▶ Foundation pads and enabling works
- ▶ On site supervision of installation and removal activities
- ▶ Final connection to services provided by others
- ▶ Chlorination of pipe work
- ▶ WRAS compliance - upgrade of all fittings to meet the Water Supply (Water Fitting) Regulations 1999
- ▶ Foul waste containment and mains free potable water solutions
- ▶ Access solutions
- ▶ Replenishment of consumables

