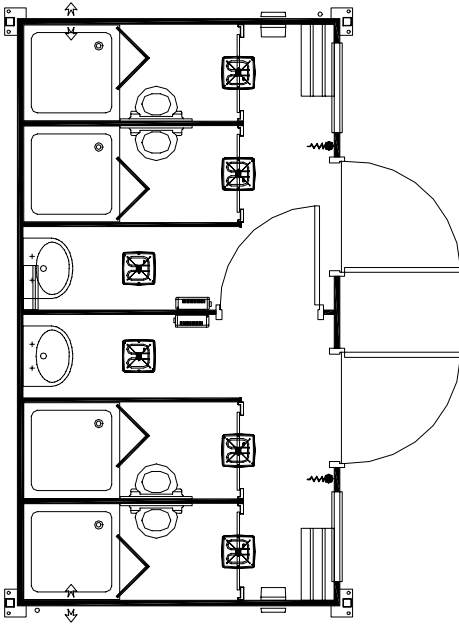


# 161 Type G

## Shower Unit

Complete self-contained shower accommodation. Service installation, heating, lighting, ventilation and insulation comply with all necessary regulations and performance criteria.



**NOT TO SCALE**

### Plumbing connections

- Water 22mm (factory tested to 40 PSI)
- Waste 110mm

### Electrical loading

- Three phase 400v
- 75 amps

### Dimensions

- External length - 5084mm
- External width - 2900mm
- Internal length - 4808mm
- Internal width - 2592mm
- Leg centres (length) - 4854mm
- Leg centres (width) - 2810mm

### Exterior Doors

Steel faced , insulated, outward opening with mortice lock, lever handle and door closer, 926 wide x 2040 high (colour Red). 2 Nr

### Windows & Vision Panels

- Horizontal sliding, obscure single glazed 750 wide x 500 high 2 Nr
- Window guards 750wide x 500 high 2 Nr

### Ventilation

- Standard high level vent 2 Nr

### Floor

- Vinyl to base throughout 14.74m<sup>2</sup>

### W. C. Area

- Wash hand basin with cold tap (large) 2 Nr
- 3kw water heater (oversink) 2 Nr
- Shower cubicle with door and instantaneous water heater 4 Nr
- Drainage connections through wall

### Heating, Lighting and Electrical

- Extractor fan 150mm c/w timer 2 Nr
- Froststat 2 Nr
- High level heater 2kw 2 Nr
- Ceiling mounted pull switch one way 2 Nr
- Consumer unit (three phase) 2 Nr
- Flourescent light (2d Flourescent) 6 Nr
- Shaver socket 2 Nr

### Fitting out

- Special partition 7.4m
- Standard partition c/w door 1 Nr
- Mirrors 2 Nr
- Cubicle partitioning fronts, White doors 4 sets
- Mircoburst air freshener 2 Nr
- Soap dispenser 2 Nr
- Medium bin 2 Nr
- Hand towel dispenser 2 Nr
- Hat and coat hook 4 Nr
- 75mm Black covered skirting throughout
- Blue cubicle fascias (Metalwork) 1 set
- Retaining catch 4 Nr
- Shower seats on backboards 4 Nr
- Raised non slip shower floor area 4 Nr
- Male pictogram 1 Nr
- Female pictogram 1 Nr
- Lacquered bench seats 600mm long 2 Nr
- Portaloo labels 1 set