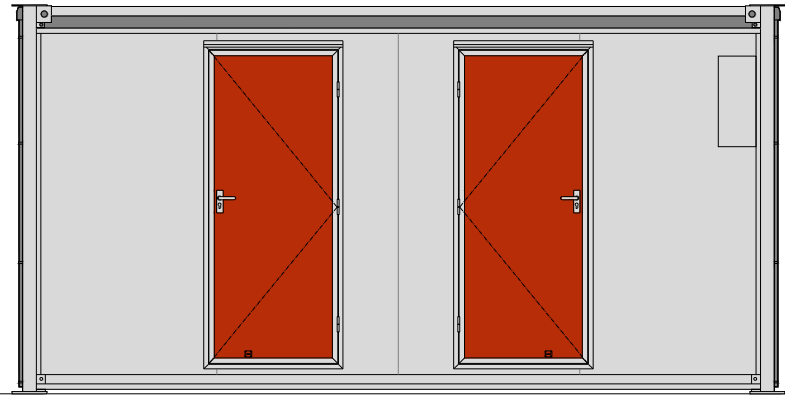
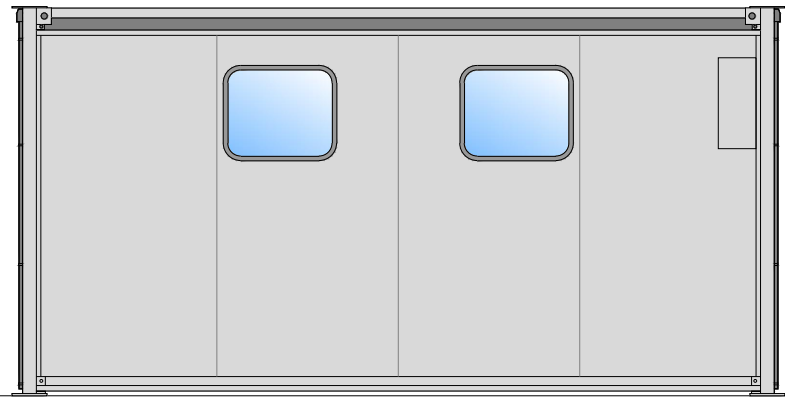


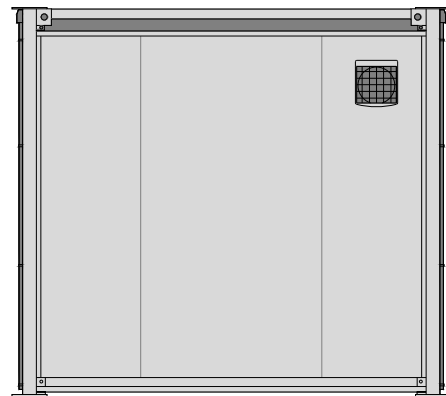
161 Type D Twin Shower and Toilet



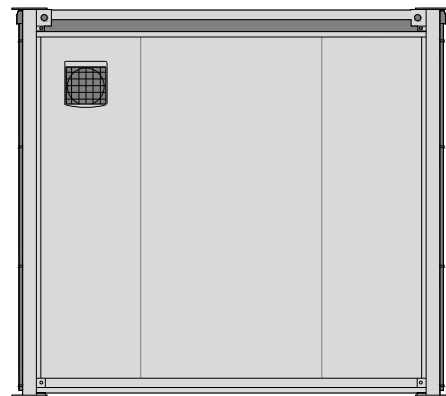
ELEVATION TO ENTRANCE - PL161 "TYPE D"



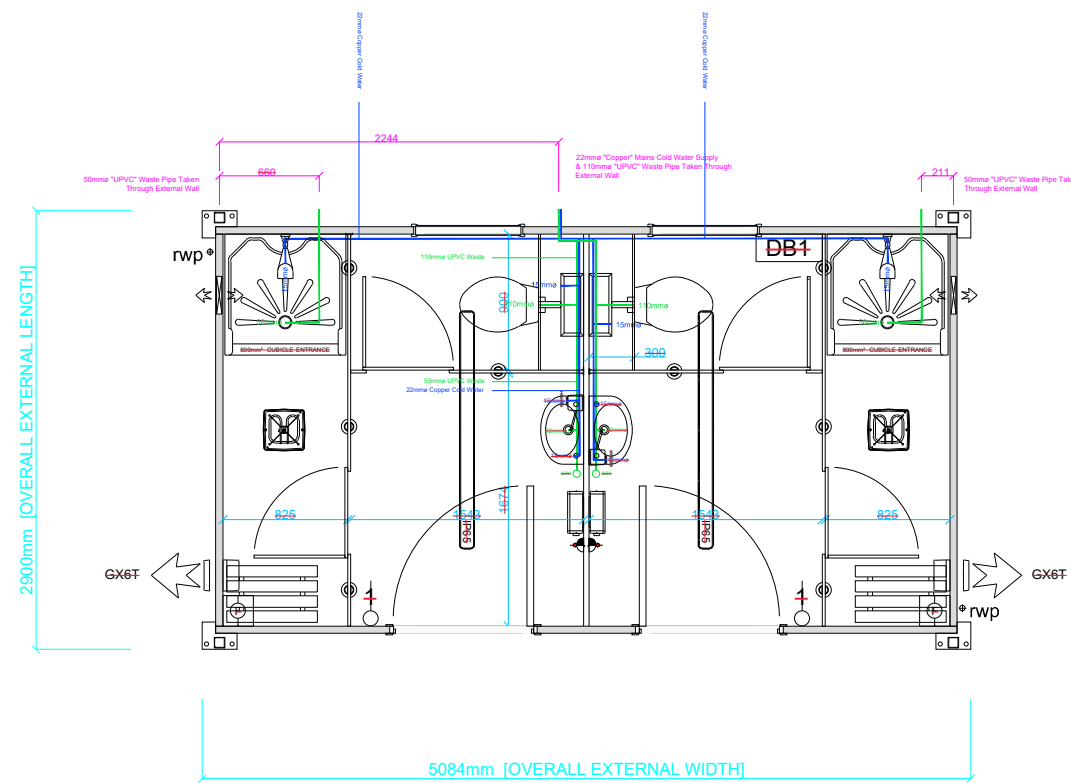
ELEVATION TO REAR - PL161 "TYPE D"



ELEVATION TO SIDE - PL161 "TYPE D"

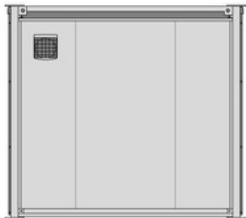
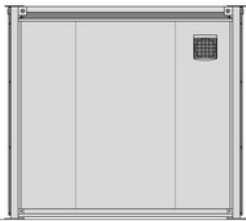
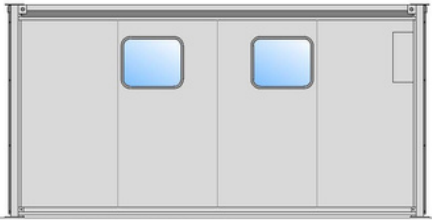
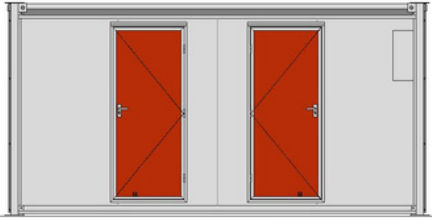


ELEVATION TO SIDE - PL161 "TYPE D"



161 Type D

Twin Shower and Toilet



Dimensions

External Length	5.09m
External Width	2.90m
External Height	2.61m
Leg Centres (length)	4.85m
Leg Centres (width)	2.81m
Shell weight	2116kg
Max handling weight	2650kg

Plumbing Connections

Water Inlet	1 x 22mm
Waste Outlet	1 x 110mm and 2 x 40mm
Running pressure require	2 bar
Inlet flow rate required	48 litres per minute

Electrical Loading

Three Phase	400v
11 Amp	(total loading across all phases)
44 Amp	per phase

Fixtures & Fittings

2 x 926mm Inward Opening External Door with Lock
2 x High Level, Obscured Windows
2 x WC
2 x Wash Hand Basin
2 x Auto Sensor (3kw) Water Heater
2 x Shower Cubicle
2 x High Level Convector Heater
2 x Extractor Fan
2 x Soap Dispenser
2 x Toilet Roll Dispenser
2 x Paper Towel Dispenser
2 x Waste Paper Bin
2 x Battery Operated Air Freshener
4 x Hat & Coat Hook
2 x Mirror
2 x Bench Seats

Important Building Information

All Qdos buildings are thoroughly cleaned and tested prior to delivery. An electrical test certificate and functional plumbing test certificate are provided within the building for inspection.

The final connections from services on site into the Qdos building should be carried out by a suitably qualified and competent professional.

The following services are excluded unless otherwise stated. A quotation is available on request:

- ▶ Foundation pads and enabling works
- ▶ On site supervision of installation and removal activities
- ▶ Final connection to services provided by others
- ▶ Chlorination of pipe work
- ▶ WRAS compliance - upgrade of all fittings to meet the Water Supply (Water Fitting) Regulations 1999
- ▶ Foul waste containment and mains free potable water solutions
- ▶ Access solutions
- ▶ Replenishment of consumables

