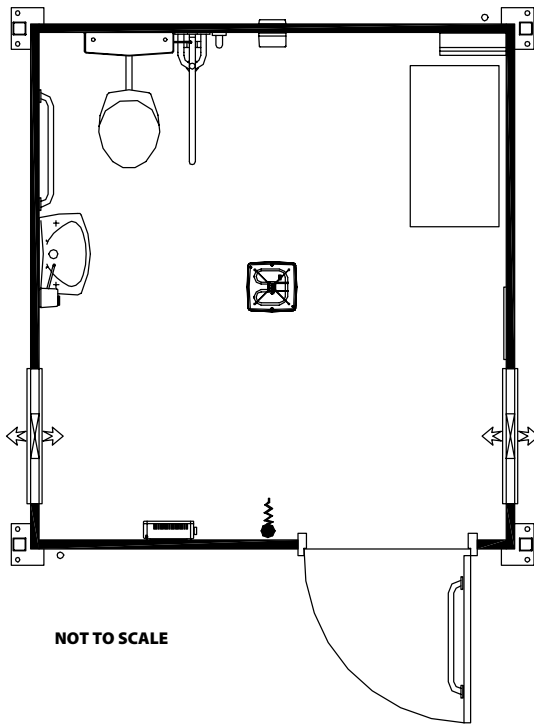


101 Type A

Accessible Toilet Unit

Complete self-contained disabled persons toilet accommodation. Service installation, heating, lighting, ventilation and insulation comply with all necessary regulations and performance criteria.



Exterior Doors

Steel faced , insulated, outward opening with mortice lock, lever handle and door closer, 926 wide x 2040 high x1

Windows

• Horizontal sliding, obscure single glazed 750 wide x 500 high x2
• Window guards 750wide x 500 high x2

Ventilation

• Standard high level vents x2

Floor

• Vinyl to base throughout 8.94m2

W.C. Area

• Accessible W.C. x1
• Accessible wash hand basin (small) x1
• 3kw water heater (auto sensor) x1
• Drainage connection through wall

Heating, Lighting & Electrical

• Extractor fan 100mm x1
• Froststat x1
• High level heater 2kw x1
• Ceiling mounted pull switch one way x1
• Consumer unit (single phase) x1
• Flourescent light (2d Flourescent) x1

Fitting out

• Accessible pictogram x1
• Mirrors x2
• Accessible grabrails x1
• Accessible backboards x1
• Mircoburst air freshener x1
• Mini jumbo dispenser x1
• Soap dispenser x1
• Medium bin x1
• Hand towel dispenser x1
• Baby minder changing unit c/w backboard x1
• Hat and coat hook x1
• 75mm Black coved skirting throughout

Plumbing connections

• Water 15mm (factory tested to 40 PSI)
• Waste 110mm

Electrical loading

• Single phase 230v
• 23 amps

Dimensions

• External length - 3084mm
• External width - 2900mm
• Internal length - 2808mm
• Internal width - 2592mm
• Leg centres (length) - 2854mm
• Leg centres (width) - 2810mm