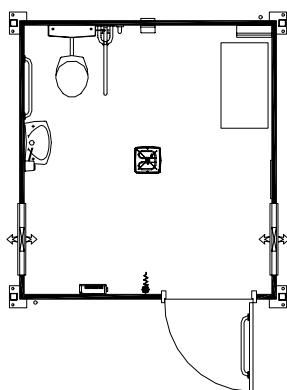


Complete self-contained disabled persons toilet accommodation. Service installation, heating, lighting, ventilation and insulation comply with all necessary regulations and performance criteria.



### Plumbing connections

- Water 15mm (factory tested to 40 PSI)
- Waste 110mm

### Electrical loading

- Single phase 230v
- 23 amps

### Dimensions

- External length - 3084mm
- External width - 2900mm
- Internal length - 2808mm
- Internal width - 2592mm
- Leg centres (length) - 2854mm
- Leg centres (width) - 2810mm

### Exterior Doors

- Steel faced , insulated, outward opening with mortice lock, lever handle and door closer, 926 wide x 2040 high (colour Red) x 1

### Windows

- Horizontal sliding, obscure single glazed 750 wide x 500 high x 2
- Window guards 750wide x 500 high x 2

### Ventilation

- Standard high level vents x 2

### Floor

- Vinyl to base throughout 8.94m<sup>2</sup>

### W.C. Area

- Accessible W.C. x 1
- Accessible wash hand basin (small) x 1
- 3kw water heater (auto sensor) x 1
- Drainage connection through wall

### Heating, Lighting and Electrical

- Extractor fan 100mm x 1
- Froststat x 1
- High level heater 2kw x 1
- Ceiling mounted pull switch one way x 1
- Consumer unit (single phase) x 1
- Flourescent light (2d Flourescent) x 1

### Fitting out

- Accessible pictogram x 1
- Mirrors x 2
- Accessible grabrails x 1
- Accessible backboards x 1
- Mircoburst air freshener x 1
- Mini jumbo dispenser x 1
- Soap dispenser x 1
- Medium bin x 1
- Hand towel dispenser x 1
- Baby minder changing unit c/w backboard x 1
- Hat and coat hook x 1
- 75mm Black coved skirting throughout

Not to scale