

# I'm A Celebrity Get Me Out Of Here



Qdos Event Hire delivered 130+ units to ITV's flagship show I'm a Celebrity...Get Me Out of Here in 2020 and 2021 when filming moved to Gwyrch Castle during the pandemic. Given the scale of the production and its rural location Qdos' extensive product range offered the perfect solution for creating the temporary offices needed by the crew, production executives, scriptwriters, producers and of course the show's famous hosts Ant & Dec.

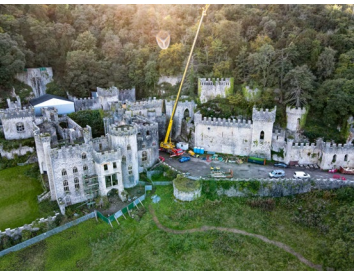
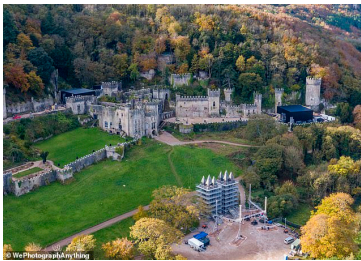
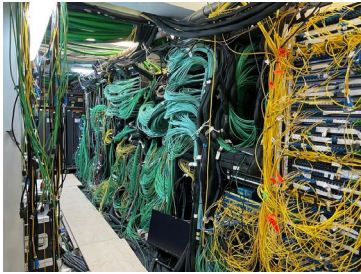
Stand out elements included:

- Plastic toilets for crew and celebrities at secret locations for the opening segment of the programme where the celebrities.
- Bespoke 4-bay and 6-bay CTX modular buildings created specifically as production offices, central rack room, streaming and offices for the programme's infamous challenges and trials.
- 12 Next Generation Production Officers for use by the programme's producers and executives.
- Two 32ft x 10ft linked cabins that were sited in the Host Village and used by Ant & Dec throughout the series. In addition, glass frontage Hospitality Suites were utilised for meetings with show executives.
- Storage spaces for the 100,000's of critters, creatures and props needed to deliver the trials that the programme is so famous for
- Mobile offices used as holding areas for the trials along with a shower trailer that the celebrities used before returning to camp
- Reefer (20ft freezer containers) and two large walk-in fridges for the numerous nasty foodstuffs that formed part of the challenges.



A combination of CTX modular buildings; jackleg cabins in various sizes and configurations; mobile offices, shower trailers and storage containers were utilised to meet ITV Studio's exact requirements. Qdos also delivered several bespoke features, including staircases, partition walls and installing lights and sockets within its storage containers.

When Storm Arwen hit the castle and caused extreme damage to the site, Qdos' team were onsite within hours to carry out repairs and ensure the show was back up and running as quickly as possible.



Units supplied included:

- 6-bay CTX Modular buildings
- 4-bay CTX Modular buildings
- Next Generation Production Offices
- 32ft x 10ft cabins
- 24ft x 9ft cabins
- 20ft x 9ft cabins
- 20ft x 8ft 5 window ticket office
- 20ft x 8ft storage containers
- Mobile offices
- 16ft x 9ft cabins
- Guardhouses
- Mobile Shower Trailer

A dedicated project manager oversaw the install of all units and ensured that they were sited correctly. The project began in early October to allow the production team and crew plenty of time to prepare for the show. As you would expect from a programme of this scale, in a brand new location and working within strict COVID-safe guidelines there were a number of last-minute requirements that the Qdos team was able to meet.

Photos by DronePics.Wales

“Thank you so much for accommodating all of our requests and getting the last-minute additions to us too! It certainly has helped us to work in a COVID-safe way. So, thank you to you and the team for all of your hard work, it has been great to work with you.”

**Sarah Turpin, Senior Site and Build Production Manager, ITV Studios**